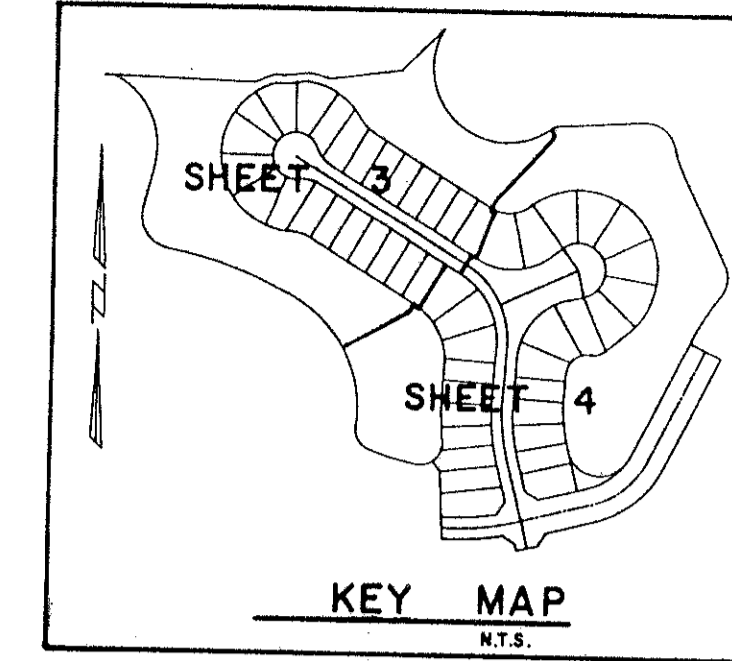


# ABERDEEN-PLAT NO. 16

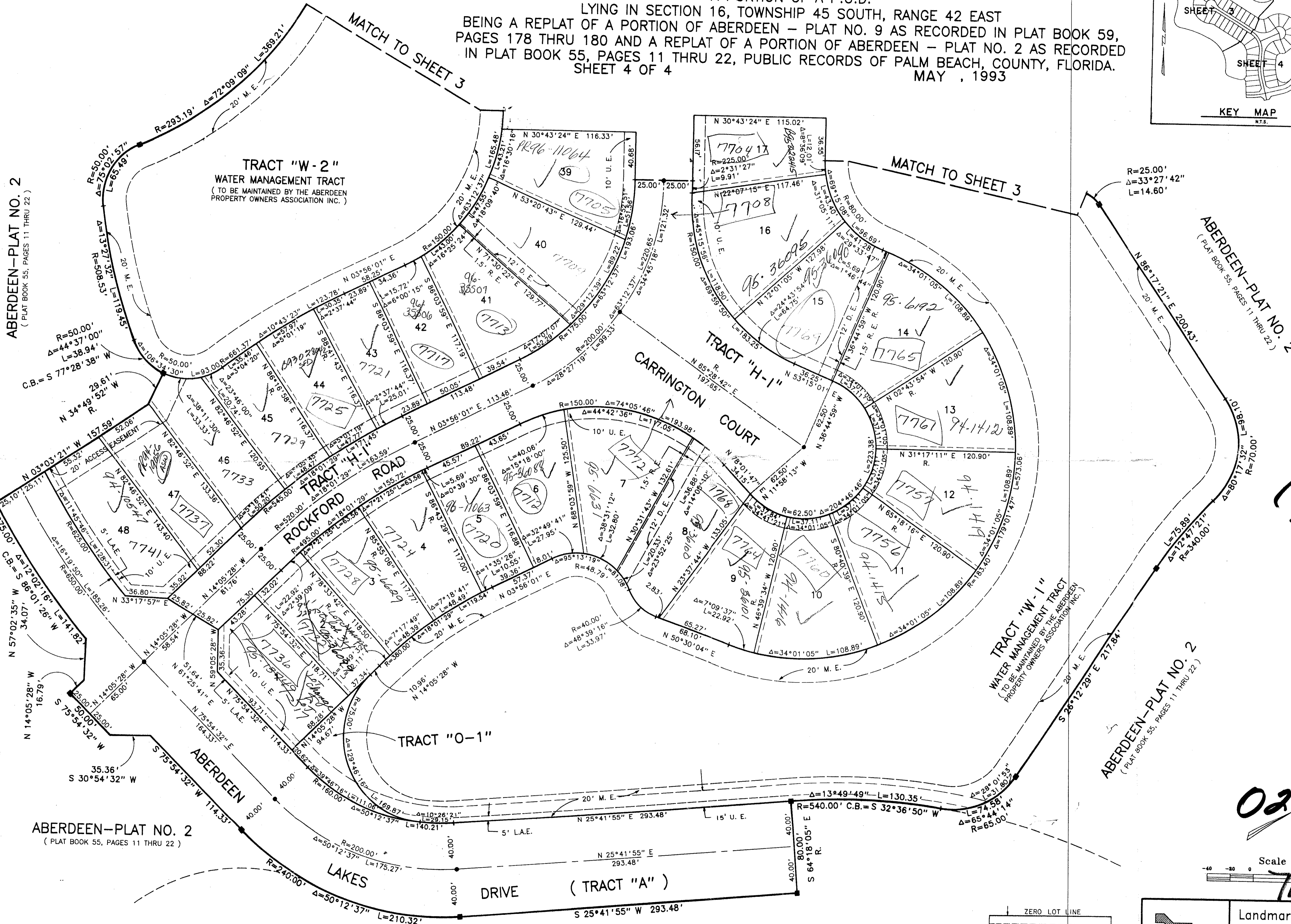
A PORTION OF A P.U.D.  
 LYING IN SECTION 16, TOWNSHIP 45 SOUTH, RANGE 42 EAST  
 BEING A REPLAT OF A PORTION OF ABERDEEN - PLAT NO. 9 AS RECORDED IN PLAT BOOK 59,  
 PAGES 178 THRU 180 AND A REPLAT OF A PORTION OF ABERDEEN - PLAT NO. 2 AS RECORDED  
 IN PLAT BOOK 55, PAGES 11 THRU 22, PUBLIC RECORDS OF PALM BEACH COUNTY, FLORIDA.  
 SHEET 4 OF 4  
 MAY, 1993



162

STATE OF FLORIDA  
 COUNTY OF PALM BEACH  
 This Plat was filed for record at \_\_\_\_\_  
 M. this \_\_\_\_ day of \_\_\_\_\_ 19\_\_\_\_  
 and duly recorded in Plat Book No. \_\_\_\_\_  
 on Page \_\_\_\_\_  
 Dorothy H. Wilken, Clerk of the Circuit Court  
 By \_\_\_\_\_ D.C.

ABERDEEN-PLAT NO. 2  
 (PLAT BOOK 55, PAGES 11 THRU 22)

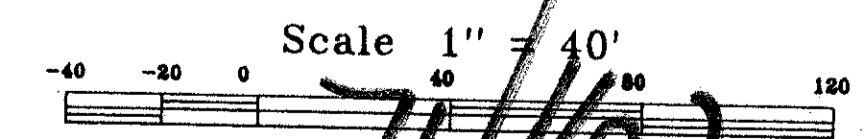


R=25.00'  
 Δ=33°27'42"  
 L=14.60'

ABERDEEN-PLAT NO. 2  
 (PLAT BOOK 55, PAGES 11 THRU 22)

PET. 80-153  
 ALLOC. #0001

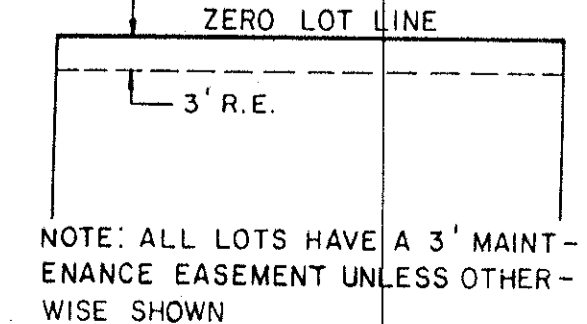
0270-018



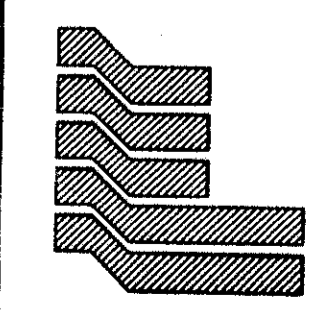
SUBDIVISION - ABERDEEN PL16  
 BOOK 71 PAGE 159  
 FLOOD MAP # 185A  
 ZONING RS  
 QUAD # 49  
 PUD NAME ABERDEEN  
 ZIP CODE 33437

ABERDEEN-PLAT NO. 2  
 (PLAT BOOK 55, PAGES 11 THRU 22)

ABERDEEN-PLAT NO. 15  
 (PLAT BOOK 69, PAGES 63 - 66)



NOTE: ALL LOTS HAVE A 3' MAINTENANCE EASEMENT UNLESS OTHERWISE SHOWN



Landmark Surveying & Mapping Inc.  
 1850 FOREST HILL BOULEVARD  
 PH. (407)433-5405 SUITE 100 W.P.B. FLORIDA

ABERDEEN - PLAT NO. 16